



Blanc
displaygroup

evOLIS
OFFICIAL PARTNER

Print Custom Plastic Tags In Seconds.


Multigrain bread
\$2.90 /Loaf
Contains: Flaxseed, Barley, Buckwheat, Wheat



ROAST CHICKEN
\$7.95 /lb
Poultry born, raised, slaughtered and cooked in US



Emmental from Savoy
\$18.99 /lbs
Guaranteed locally produced in:
Switzerland
Unpasteurized cow's milk.
Fat content: 45%
Contains milk.





Blanc Display Group, a North American leader in supermarket and retail store merchandising specializing in signage and displays is pleased to partner with Evolis, premier thermal printer manufacturer to present the Edikio line of thermal transfer price labeling systems. The combination of consumer information, cutting-edge technology and good looks can be found in the Edikio solution systems. The sleek all-in-one, all-inclusive personalized price labeling system delivers tags in seconds offering customers immediate results and a competitive edge.

PERSONALIZED PRICE TAGS THAT STAND OUT

TIME SAVINGS

- **Maximum flexibility and responsiveness:** print your signs on demand, directly at your point of sale and benefit from up-to-date labeling in real time.
- **Independence:** free yourself from delivery lead times and minimum order quantities set by your signage suppliers.

A STRONGER BRAND IMAGE

- **Unique labels:** personalize your price tags by adding your logo and your choice of graphic features to stand out from your competitors.
- **Professional appearance on your display stands:** create harmony across all your shelves and spark customer interest with attractive signage.
- **Clear and legible signage** with black tags printed in white with a chalkboard finish or choose color tags and/or colored printer ribbon (each sold separately) to create an exclusive look.

VISIBILITY AND HYGIENE GUARANTEED

- **Ideal dimensions:** the credit card format is an ideal size to highlight your products on the display stands.
- **Hygiene and durability:** very easy to clean, plastic cards are resistant to cold and moisture.

ICONS IDENTIFY PRODUCT INGREDIENTS

- Display all the information concerning your products, such as:
 - Product name
 - Price and unit of measurement
 - The country or place of origin
 - For fish: the scientific name, production method, fishing area and sub-area, and fishing gear used
 - Allergens, etc.



SIMPLIFIED DISPLAY OF ALL PRODUCT INFORMATION



Product name
Price
Image or logo
Allergens



Barcodes
Reference
Other information

• **Clear and complete consumer information covering:**

- **Food safety:** origin and composition
- **Compatibility with type of diet:** allergies, particular diets, customs, traditions, or religious practices
- **Responsible consumption:** organic and/or locally produced product.

• **Focus on your promotions and new products:** identify new products and special offers by adding notes directly on your price tags.

Transform your signage into real sales tools by displaying all the useful information to your staff on the reverse side.

Informative icons identify product ingredients, additives, and common allergens. Ingredient disclosure provides customer service and promotes customer satisfaction to consumers with food restrictions due to dietary needs, religious practices, traditions, and customs.





MULTIPLY THE POSSIBILITIES AND OPTIMIZE YOUR PROFITABILITY

VARIOUS COMBINATIONS POSSIBLE

Evolis offers a complete range of cards and ribbons in order to create signage which meet all your needs:

- **Standard or long black cards**
(Flex solution for 2 formats: 4.72" x 1.97" (120 x 50 mm) or 5.90" x 1.97" (150 x 50 mm) with printing in white for your specific needs.



- **White cards** for monochrome printing (black, red, green, blue) or color, in credit card format or 2.13" x 1.10" (54 x 28 mm) for labeling smaller products and/or adding a special note: "New," "House specialty," etc.



- **Cards in solid colors or imitation slate** with monochrome printing (in black, white, red, green, or blue).



PRINT ALL YOUR CARDS

Increase the profitability of your investment by printing all the badges and cards linked to your activity. Simply replace the consumables for the Flex and Duplex solutions for printing in color on white cards.



Employee badges



Gift cards



Loyalty cards



Invitations to your events



ALL-IN-ONE LABELING SOLUTIONS: PROFESSIONAL AND SIMPLE

Edikio solutions by Evolis offer you everything you need to create attractive price tags quickly, efficiently, and economically directly at your points of sale. They consist of:



1. DEDICATED PROFESSIONAL SOFTWARE

- **Create in just a few clicks:** choose your design from the numerous templates especially for fresh products and display the information on your tags.
- **Limit the risk of error** by importing product information onto your cards straight from your MS Excel® file (products, prices, etc.).
- **Authentic-looking labels:** the Edikio software has an exclusive chalk handwriting font to give your signage a genuine look.
- **Versions for all your needs:** there are 3 versions of the Edikio software to meet all retailers needs.

2. HIGH-PERFORMANCE PRINTER

- **Edikio printers are easy to use:** they work just as easily as a standard office printer.
- **Print in record time, individually or in batches:** print a price tag in 15 seconds!
- **Discreet integration into your work environment:** Edikio printers by Evolis are compact, so they can be used without constraints at your point of sale or office.

3. BLANK TAGS AND PRINTER RIBBON INCLUDED

- **Easy to install:** the Edikio plastic tags and printer ribbon are installed in one easy step.
- **Evolis High Trust® quality:** Edikio ribbons and cards have been tested by the Evolis quality department to guarantee price tags with a professional finish.

FIND YOUR IDEAL SOLUTION



EDIKIO ACCESS

The most affordable solution for single-sided price tags



EDIKIO FLEX

The flexible solution for labels on standard or long cards



EDIKIO DUPLEX

The advanced solution for double-sided tags



Type of label	<ul style="list-style-type: none"> Labels in credit card format, single-sided 	<ul style="list-style-type: none"> Long labels and credit card format labels 	<ul style="list-style-type: none"> Labels in credit card format, double-sided
Label use	<ul style="list-style-type: none"> Fewer than 100 labels on the shelf 1 to 2 updates per year 	<ul style="list-style-type: none"> 100 to 300 labels on the shelf Several updates per year 	<ul style="list-style-type: none"> Over 300 labels on the shelf Weekly or daily updates
Product information management	Product list, sometimes computerized, often manual		Highly developed price schedule

SOFTWARE

Templates grouped by trade	•	•	•
Image library	•	•	•
Exclusive 'chalk handwriting' font	•	•	•
Import prices from Microsoft Excel®	•	•	•
Automatic data update		•	•
Manage product categories	•	•	•
Manage product sub-categories		•	•
Preview of the label	•	•	•
Automatic detection of tickets modified since last print cycle		•	•
Protected by password		•	•
Manage multi-user rights			•

PRINTER

Printing in credit card format	•	•	•
Printing in long format		•	
Automatic printing on both sides			•
Feeder capacity (in cards)	25	50	100
Hopper capacity (in cards)	25	25	100
LCD touchscreen			•
USB connection	•	•	•
Ethernet connection		•	•
Warranty	1 year	2 years	3 years

CONSUMABLES INCLUDED

White ribbon - 500 prints	•		
White ribbon - 1000 prints*		•	•
Black PVC cards in credit card format	100	100	200
Black PVC cards in long format (150 x 50mm - 5.90" x 1.97")		100	

* Credit card format (85.6 x 54 mm - 3.37" x 2.13"), one side

Printers, Software and Warranty



Edikio Access - Price Tag Solution

Single-sided credit card size signage for businesses using 100 or less labels on the shelf, requiring one to two updates a year.

#B3350003 Edikio Access - Price Tag Solution

1-9	10-24	25+
\$690.00	\$655.50	Call for Price

1 YEAR WARRANTY

See our website for more information



Edikio Flex - Price Tag Solution

The Flex offers flexibility among credit card size and longer format tags. Best for businesses using 100-300 labels a year with several updates.

#B3350005 Edikio Flex - Price Tag Solution

1-9	10-24	25+
\$1390.00	\$1320.50	Call for Price

2 YEAR WARRANTY

See our website for more information



Edikio Duplex - Price Tag Solution

The Duplex features double-sided credit card format printing. Best for high-volume grocery stores using 300+ labels with regular updates.

#B3350004 Edikio Duplex - Price Tag Solution

1-9	10-24	25+
\$2190.00	\$2080.50	Call for Price

3 YEAR WARRANTY

See our website for more information

Repair Care Loyalty Program

Repair Care Loyalty Program

Printer	1 Year	2 Year	3 Year
#B0000001 Access Printer Repair Care	\$80.00	\$135.00	\$200.00
#B0000002 Flex Printer Repair Care	\$200.00	\$275.00	\$400.00
#B0000003 Duplex Printer Repair Care	\$250.00	\$425.00	\$650.00

The Repair Care Loyalty Program is available at the time of an Edikio printer system purchase. The Repair Care Loyalty Program is a printer loaner program administered by Blanc Display Group when a Blanc Display Group representative deems any Covered Equipment repair necessary. Under this service program, the Customer with an Edikio printer requiring repair would be eligible to receive a "loaner" printer of the same model as the printer requiring service. The purpose of the Repair Care Loyalty Program is to minimize printing downtime. As such, Blanc Display Group will at its expense ship a replacement unit to the customer, create a Return Material Authorization (RMA) and provide a prepaid shipping label for the return of the defective unit. The Customer is responsible for the shipment of the defective Covered Equipment to Blanc Display Group using the RMA provided by Blanc Display Group. The defective Covered Equipment must be returned to Blanc Display Group within seven (7) days of Customer's receipt of the replacement unit. If the unit is not returned to Blanc Display Group within the specified time, the Customer will be invoiced for the full retail price of the replacement unit.

Upon the repair and the return of the Covered Equipment, the Customer will have seven (7) days to return the loaner printer unit using the prepaid shipping label issued by Blanc Display Group. If the loaner printer is not returned to Blanc Display Group within the specified time, the Customer will be invoiced for the full retail price of the loaner printer unit.

Edikio Software Upgrades

#B3350006 Edikio Software Upgrade from Lite Edition to Standard Edition

1-9	10-24	25+
\$239.00	\$227.00	Call for Price

The basic upgrade of Lite software to the Standard package includes: templates grouped by trade, an image library, chalk handwriting font, Microsoft Excel® compatibility to import prices, product category management, and label preview. Plus these additional features: automatic data updates, product sub-category management, automatic detection of ticket modification since the last print cycle, and password protection.

#B3350007 Edikio Software Upgrade from Lite Edition to Pro Edition

1-9	10-24	25+
\$599.00	\$569.00	Call for Price

Includes all the features of the Standard software package (B3350006) with the additional capability of managing multi-user rights.

#B3350008 Edikio Software Upgrade from Standard Edition to Pro Edition

1-9	10-24	25+
\$359.00	\$341.00	Call for Price

Includes all the features of the Standard software package (B3350006) with the additional capability of managing multi-user rights.



Ribbons

Edikio Printing Ribbons

Your labels are only as good as the ink used. Make yours stand out with classic white, black or a colorful mix (based on the printer model). These ribbons are no-mess and easy to install. Simply drop in; click, and you're done! Please note: The BlackFlex ribbon is mandatory for heat resistant blank cards.



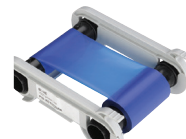
#B3350009 Edikio White Printing Ribbon for Access Edition Printer Only - 500 prints/roll

1-24	25-49	50-99	100-249	250+
\$19.00	\$17.50	\$15.75	\$15.20	\$14.25



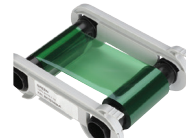
#B3350010 Edikio White Printing Ribbon for Duplex & Flex Edition Printer Only - 1000 prints/roll

1-24	25-49	50-99	100-249	250+
\$38.00	\$34.95	\$31.55	\$30.40	\$28.50



#B3350013 Edikio Blue Printing Ribbon for Duplex & Flex Edition Printer Only - 1000 prints/roll

1-24	25-49	50-99	100-249	250+
\$38.00	\$34.95	\$31.55	\$30.40	\$28.50



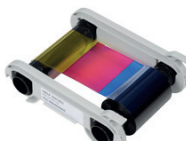
#B3350015 Edikio Green Printing Ribbon for Duplex & Flex Edition Printer Only - 1000 prints/roll

1-24	25-49	50-99	100-249	250+
\$38.00	\$34.95	\$31.55	\$30.40	\$28.50



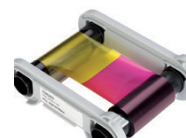
#B3350017 Edikio Metallic Silver Printing Ribbon for Duplex & Flex Edition Printer Only - 1000 prints/roll

1-24	25-49	50-99	100-249	250+
\$85.00	\$78.20	\$70.55	\$68.00	\$63.75



#B3350019 Edikio 1/2 CMYKO Printing Ribbon for Duplex & Flex Edition Printer Only - 400 prints/roll

1-24	25-49	50-99	100-249	250+
\$71.25	\$65.55	\$59.25	\$57.00	\$53.50



#B3350021 Edikio CMYKO Printing Ribbon for Duplex & Flex Edition Printer Only - 300 prints/roll

1-24	25-49	50-99	100-249	250+
\$90.00	\$82.80	\$74.70	\$72.00	\$67.50



#B3350023 Edikio BlackFlex Printing Ribbon for Duplex & Flex Edition Printer Only - 1000 prints/roll

1-24	25-49	50-99	100-249	250+
\$19.95	\$18.35	\$16.55	\$15.95	\$14.95

Works with Heat Resistant Tags



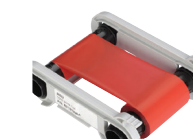
#B3350011 Edikio Black Printing Ribbon for Access Edition Printer Only - 500 prints/roll

1-24	25-49	50-99	100-249	250+
\$14.25	\$13.10	\$11.85	\$11.40	\$10.70



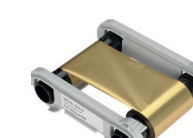
#B3350012 Edikio Black Printing Ribbon for Duplex & Flex Edition Printer Only - 2000 prints/roll

1-24	25-49	50-99	100-249	250+
\$24.70	\$22.75	\$20.50	\$19.75	\$18.55



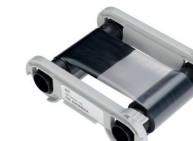
#B3350014 Edikio Black Printing Ribbon for Duplex & Flex Edition Printer Only - 1000 prints/roll

1-24	25-49	50-99	100-249	250+
\$38.00	\$34.95	\$31.55	\$30.40	\$28.50



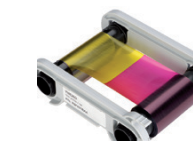
#B3350016 Edikio Metallic Gold Printing Ribbon for Duplex & Flex Edition Printer Only - 1000 prints/roll

1-24	25-49	50-99	100-249	250+
\$85.00	\$78.20	\$70.55	\$68.00	\$63.75



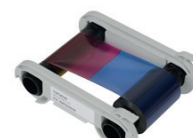
#B3350018 Edikio KO Printing Ribbon for Duplex & Flex Edition Printer Only - 600 prints/roll

1-24	25-49	50-99	100-249	250+
\$74.00	\$68.00	\$61.50	\$59.20	\$55.50



#B3350020 Edikio CMYKO Printing Ribbon for Duplex & Flex Edition Printer Only - 200 prints/roll

1-24	25-49	50-99	100-249	250+
\$68.40	\$62.95	\$56.80	\$54.70	\$51.30



#B3350022 Edikio CMYKO-K Printing Ribbon for Duplex & Flex Edition Printer Only - 200 prints/roll

1-24	25-49	50-99	100-249	250+
\$76.00	\$69.95	\$63.00	\$61.00	\$57.00



Cleaning Kits

Cleaning Kits



Optimum Cleaning Kits For High Performance Printers

Plastic card printing requires a routine printer cleaning as cards can have high static charges and can attract dust and dirt. To help you maintain your printer's performance and lifespan, we offer several cleaning kits (based on printer model) to perform extensive cleaning of the equipment.

- PRINT HEAD:** Swab, Pens
- CLEANING ROLLERS:** Pre-saturated cards, adhesive cards
- TRANSPORT ROLLERS:** Pre-saturated cards, T cards
- LAMINATOR:** Adhesive cards
- PRINTER:** Wipes

Warranty and Printer Cleaning

The print head warranty is directly linked to routine cleaning of your printer. If you do not carry out this cleaning at the required times, the print head warranty will cease to be valid.

CLEANING CYCLES (number of cards). Regular cleaning is required after 1000 cards have been printed. Warranty is invalid if not cleaned after 1200 cards. Advanced cleaning is recommended after 5000 cards printed.

Cleaning Accessories for the Edikio Printer

For optimum performance, routine printer cleaning is required after 1000 cards have been printed. Failure to comply with standard scheduled maintenance may result in print head damage as well as a voided warranty.

#B3350024 Edikio Regular Cleaning Kit (Duplex & Flex) 5-Adhesive Cards, 5-Swabs					
1-24	25-49	50-99	100-249	250+	
\$19.95	\$18.35	\$16.55	\$15.95	\$14.95	

#B3350025 Edikio Advanced Cleaning Kit (Duplex & Flex) 2-T Cards, 2-Adhesive Cards, 1-Pen, Wipes					
1-24	25-49	50-99	100-249	250+	
\$28.50	\$26.25	\$23.65	\$22.80	\$21.50	

#B3350026 Edikio Adhesive Card Cleaning Kit (Duplex & Flex) 50-Adhesive Cards					
1-24	25-49	50-99	100-249	250+	
\$47.50	\$43.70	\$39.45	\$38.00	\$35.65	

#B3350027 Edikio T Card Cleaning Kit (Access, Duplex & Flex) 10-T Cards					
1-24	25-49	50-99	100-249	250+	
\$47.50	\$43.70	\$39.45	\$38.00	\$35.65	

#B3350028 Edikio Pen Cleaning Kit (Access, Duplex & Flex) 3-Pens					
1-24	25-49	50-99	100-249	250+	
\$5.70	\$5.25	\$4.75	\$4.55	\$4.30	

#B3350029 Edikio Complete Cleaning Kit (Access) 2-T Cards and 1-Pen					
1-24	25-49	50-99	100-249	250+	
\$14.25	\$13.10	\$11.85	\$11.40	\$10.70	

#B3350030 Edikio HeadClean Cleaning Kit (Duplex & Flex) 25- Swabs					
1-24	25-49	50-99	100-249	250+	
\$33.25	\$30.60	\$27.60	\$26.60	\$24.95	

#B3350031 Edikio DustClean Cleaning Kit (Duplex & Flex) Wipes (dispenser)					
1-24	25-49	50-99	100-249	250+	
\$9.50	\$8.75	\$7.90	\$7.60	\$7.15	



Cards/Tags

Tags for use with the Edikio Printer

Substantial yet flexible, the black matte and white gloss blank tags are the perfect canvas for designer pricing inserts. Additional gloss tags are also available in the following colors: yellow, orange, burgundy, green, blue, gold and silver.



Black Tag. 2 1/8" H x 3 3/8" W

#B3290003 Black Glossy Cards - Pack of 500. 2 1/8" h x 3 3/8" w					
1-24	25-49	50-99	100-249	250+	
\$49.50	\$43.50	\$39.60	\$34.65	\$29.50	

#B3290002 Black Matte Cards - Pack of 500. 2 1/8" h x 3 3/8" w					
1-24	25-49	50-99	100-249	250+	
\$97.50	\$85.80	\$78.00	\$68.25	\$58.50	



#B3290005
Yellow Gloss



#B3290006
Orange Gloss



#B3290007
Burgundy Gloss



#B3290009
Blue Gloss



#B3290011
Gold Gloss



#B3290012
Silver Gloss



#B3290008
Green Gloss

Additional Gloss Tag Colors. 2 1/8" H x 3 3/8" W



White Gloss Tag. 2 1/8" H x 3 3/8" W

#B3290004 White Glossy Cards - Pack of 500. 2 1/8" h x 3 3/8" w					
1-24	25-49	50-99	100-249	250+	
\$49.50	\$43.50	\$39.60	\$34.65	\$29.50	

Color Glossy Cards - Pack of 500. 2 1/8" h x 3 3/8" w (See item numbers below colors)

1-24	25-49	50-99	100-249	250+	
\$97.50	\$85.80	\$78.00	\$68.25	\$58.50	



White Glossy Split Tag

Print. Bend. Top. These tags are practically instantaneous toppers. Simply print the desired messages, bend along the score line, and slide into our Double-Sided Topper Clip (#B3110106) attached to pricing tag. Clean and compact.

#B3290014 White Glossy Split Tag - Pack 100. 2 1/8" h x 3 3/8" w					
1-24	25-49	50-99	100-249	250+	
\$45.00	\$40.00	\$36.00	\$31.50	\$27.00	



Heat Resistant Tag

This daredevil tag doesn't mind the heat. In fact, it's right at home with steam tables and the like. Classic black messaging on the white tag offers clean, clear lines. Requires BlackFlex ribbon (#B3350023).

#B3290013 White Heat Resistant Tag - Pack of 100. 2 1/8" h x 3 3/8" w					
1-24	25-49	50-99	100-249	250+	
\$86.00	\$75.00	\$69.00	\$60.00	\$52.00	

Black Matte Long Tag for the Flex Printer.

Pack of 100. Exclusive to the Edikio Flex Thermal Printer these long format black PVC cards are perfect for item information, preparation, recipes, and hints or tips. Best of all you can manually flip these single-sided cards to print on the reverse side turning it (literally) double-sided in seconds.



#B3290024

#B3290024 Black Matte Long Tag For Flex Printer - Pack of 500. 1 97/100" h x 5 9/10"					
1-24	25-49	50-99	100-249	250+	
\$150.00	\$132.00	\$120.00	\$105.00	\$90.00	

For use ONLY in the Edikio Flex - Price Tag Printer



#B3290026

#B3290026 White Gloss Long Tag For Flex Printer - Pack of 500. 1 97/100" h x 5 9/10"					
1-24	25-49	50-99	100-249	250+	
\$145.00	\$128.00	\$116.00	\$101.50	\$87.00	

For use ONLY in the Edikio Flex - Price Tag Printer



#B3290025

#B3290025 Black Matte Long Tag For Flex Printer - Pack of 500. 1 97/100" h x 4 63/100"					
1-24	25-49	50-99	100-249	250+	
\$125.00	\$110.00	\$100.00	\$87.50	\$75.00	

For use ONLY in the Edikio Flex - Price Tag Printer



#B3290027

#B3290027 White Gloss Long Tag For Flex Printer - Pack of 500. 1 97/100" h x 4 63/100"					
1-24	25-49	50-99	100-249	250+	
\$120.00	\$106.00	\$96.00	\$84.00	\$72.00	

For use ONLY in the Edikio Flex - Price Tag Printer

Printed Card/Tags



#B3290015 Meat Tag



#B3290016 Deli Tag



#B3290017 Cheese Tag



#B3290018 Floral Tag



#B3290019 Prepared Foods Tag



#B3290020 Salad Bar Tag



#B3290021 Seafood Tag



#B3290022 Bakery Tag

Specialty Department Specific Tags. 2 1/8" H x 3 3/8" W

Color code departments with color tabbed tags. Vibrant means visible and these tags don't disappoint. Choose from Meat (red), Deli (orange), Cheese (yellow), Floral (pink), Prepared Foods (brown), Salad Bar (green), Seafood (blue), Bakery (tan).

Specialty Department Specific Glossy Tags - Pack of 500. 2 1/8" h x 3 3/8" w (See item numbers below Department Tags)

1-24	25-49	50-99	100-249	250+
\$115.00	\$100.00	\$92.50	\$80.00	\$70.00

Barn Wood Frame Tags. 2 1/8" H x 3 3/8" W

The standard 3 3/8" W x 2 1/8" H tag with a faux rustic wood frame. The stylish frame places the focus squarely, or in this case rectangularly, on the item's description and price.

#B3290023 Barn Wood Frame Tag - Pack of 500. 2 1/8" h x 3 3/8" w

1-24	25-49	50-99	100-249	250+
\$115.00	\$100.00	\$92.50	\$80.00	\$70.00



#B3290001 Barn Wood Frame Tag - Pack of 500. 2 1/8" h x 3 3/8" w

1-24	25-49	50-99	100-249	250+
\$115.00	\$100.00	\$92.50	\$80.00	\$70.00



For use with Tag Holder with Built-in Adapter, Topper Slot and PLU Window (#B3430055).

Toppers

Promo Toppers (For use with the Tag Holder and Double Sided Topper Clip)

Value-added toppers turn ordinary tags into extraordinary sales tools. Just place a double-sided topper clip (#B3110106) atop the tag and insert the desired topper message.



#B3250069 Manager's Special. #B3250070 Advertised Special.



#B3250072 Organic. #B3250071 Sale.



#B3250073 Store Made. #B3250074 Gluten Free.



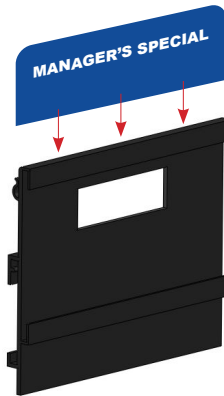
#B3250075 All Natural. #B3250076 Local.



#B3250077 Locally Sourced.

Promo Toppers - Pack of 10. 3 3/8" W
(See item numbers below Promo Toppers)

1-24	25-49	50-99	100-249	250+
\$5.20	\$4.58	\$4.16	\$3.64	\$3.12



#B3430055 Tag Holder with Built-in Adapter, Topper Slot and PLU Window (Located on next page)



#B3110106 Double-Sided Topper Clip (Located on next page)

2" Round Side Toppers (For use with the Tag Holder)

Turn your price tag into a messaging marquee with the addition of a side topper. For use with the tag holder (#B3430055), grab the attention of shoppers with showstopping side topper messaging. Your choice of: Manager's Special, Sale, Store Made, Advertised Special, Organic, Gluten Free, Local, All Natural, and Locally Sourced.



#B3250078 Manager's Special. #B3250079 Advertised Special. #B3250083 Gluten Free.



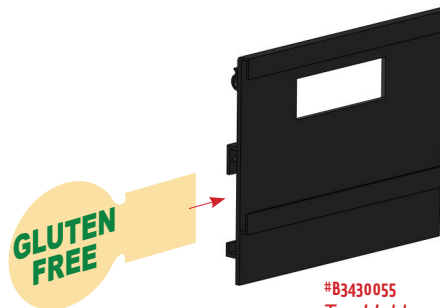
#B3250084 All Natural. #B3250080 Sale. #B3250081 Organic.



#B3250086 Locally Sourced. #B3250085 Local. #B3250082 Store Made.

Side Toppers - Pack of 10. 2" Round
(See item numbers below Side Toppers)

1-24	25-49	50-99	100-249	250+
\$7.50	\$6.60	\$6.00	\$5.25	\$4.50



#B3430055 Tag Holder with Built-in Adapter, Topper Slot and PLU Window (Located on next page)

Tabletop Easel with 3" Channel and 2 1/2" Base

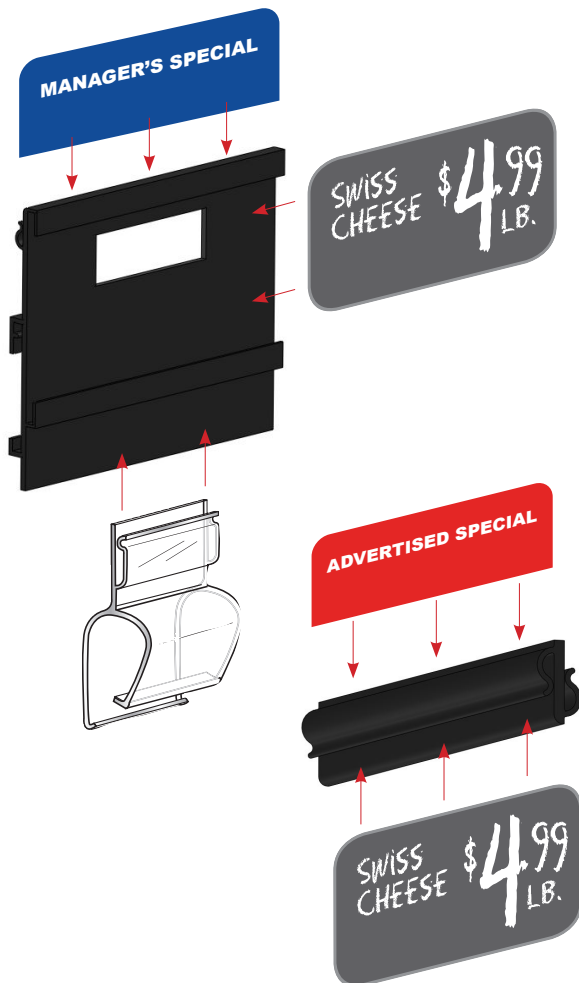
Compact and sturdy, this tabletop easel displays nine tags—three on each row—and a custom topper. Perfect for prepared food stations, cheese displays, menus, and more. Includes a custom topper.

#B2133016 Tabletop Easel with 3" Channel and 2 1/2" Easel. 6 17/32" h x 10 13/16" w

1-4	5-24	25-49	100-249	100+
\$85.00	\$35.00	\$25.00	\$20.00	\$17.00

TODAY'S SPECIALS

Sample of a custom topper



Tag Holder with Built-in Adapter, Topper Slot and PLU Window. 2 1/8" H x 3 3/8" W

Take your tag to new levels with this versatile tag holder. The durable, classic black plastic includes a built-in adapter in the back that is suited to the Adapta line of attachments as well as an adapter at the bottom for use with our extensive line of separate attachments. Plus the PLU window offers retailers access to pertinent information without display disruption.

#B3430055 Tag Holder with Built-in Adapter, Topper Slot and PLU Window - Pack of 25. 2 1/8" h x 3 3/8" w

1-24	25-49	50-99	100-249	250+
\$33.75	\$29.75	\$27.00	\$23.75	\$20.00

Double-Sided Topper Clip. 3 3/8" W

Add a simple topper clip to the tag for additional messaging and added value. Simply place the topper clip onto the top of the tag and then insert the desired topper. Voila!

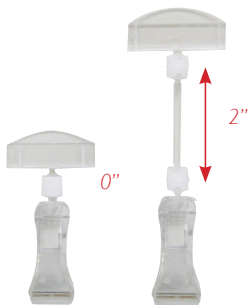
#B3110106 Double-Sided Topper Clip - Pack of 25. 3 3/8" w

1-24	25-49	50-99	100-249	250+
\$16.25	\$14.25	\$13.00	\$11.50	\$9.75

Sign Holders and Attachments

Sign Holders and Accessories

Elevate the tags to another level with the addition of price tag holders, topper clips, spring clips, spikes, and more. Showcase the signage and product messaging in a variety of positions—portrait or landscape—with an array of easy add-on attachments.



Clear Spring Clips

Raise your signage with Clear Spring Clips. They are available with a plain clip as well as a 2" and/or 6" extender, each sold separately.

Clear Spring Clips					
Quantity:	1-499	500-999	1000-2499	2500-4999	5000+
#B3110024 No extender	\$1.09	\$1.03	\$0.96	\$0.88	\$0.85
#B3110029 2" extender	\$1.43	\$1.35	\$1.22	\$1.06	\$1.01



Separate Spring Clip with Clip-on Sign Holder

Well, one thing is clear or is it two? These clips grip signage at the top while firmly anchoring the lower clip to edges and/or ledges.

#B3110031 Separate Spring Clip with Clip-on Sign Holder					
Quantity:	1-499	500-999	1000-2499	2500-4999	5000+
	\$1.45	\$1.36	\$1.25	\$1.16	\$1.08

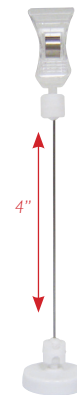


Black Spring Clips

Black is always in fashion. Choose plain ebony clips or those with 2" and/or 4" extenders, each sold separately.

Black Spring Clips					
Quantity:	1-499	500-999	1000-2499	2500-4999	5000+
#B3110023 No extender	\$1.35	\$1.28	\$1.21	\$1.14	\$1.08
#B3110030 2" extender	\$1.75	\$1.69	\$1.55	\$1.39	\$1.29
#B3110034 4" extender	\$1.99	\$1.87	\$1.70	\$1.55	\$1.39

Heavy-duty magnetic base attaches to metal surfaces.



Magnetic Base Spring Clip. 4"

The sturdy, white magnetic base clings to metal surfaces, while its clear spring clip has a firm hold of your signage. Bonus: The 4" wire tilts to a perfect angle.

#B3110032 Magnetic Base Clip-on Sign Holder. 4"					
Quantity:	1-499	500-999	1000-2499	2500-4999	5000+
	\$3.40	\$3.05	\$2.73	\$2.47	\$2.25

Sign Holders and Attachments

Swivel Spear Clip

A real head turner, this strong, clear Swivel Spear Clip stakes its claim as being multifaceted with its ability to tilt and rotate from 0° to 90°.

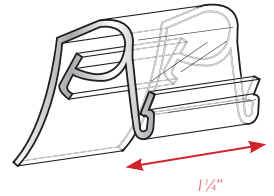


#B3110079 Separate Swivel Spear Clip

1-499	500-999	1000-2499	2500-4999	5000+
\$1.27	\$1.12	\$1.02	\$0.95	\$0.87

Tray Clip

Clear Tray Clips hug the tray's edge while keeping the signage snug and in place.

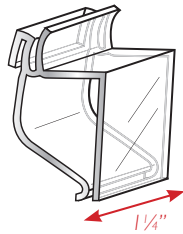


#B3110012 Separate Tray Clip

1-499	500-999	1000-2499	2500-4999	5000+
\$0.85	\$0.75	\$0.68	\$0.59	\$0.51

2-Way Gourmet Clip

Situate your signage up or down with this clear, clever design.

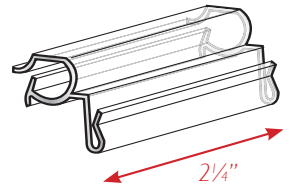


#B3110014 Separate 2-Way Gourmet Clip

1-499	500-999	1000-2499	2500-4999	5000+
\$0.45	\$0.39	\$0.36	\$0.32	\$0.27

Basket Clip

The perfect balance. Securely fastens to baskets while anchoring signage.

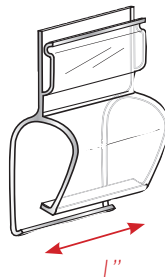


#B3110004 Separate Basket Clip

1-499	500-999	1000-2499	2500-4999	5000+
\$0.56	\$0.45	\$0.42	\$0.39	\$0.36

Gourmet Clip

Clear Gourmet Clips hug rims, lips and edges for a firm grip.

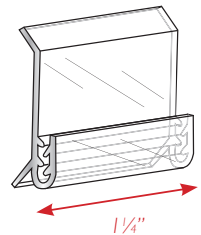


#B3110001 Separate Gourmet Clip

1-499	500-999	1000-2499	2500-4999	5000+
\$0.46	\$0.29	\$0.26	\$0.24	\$0.22

Shelf Clip

Clean, clear and keeps your paper signage crisp and upright.



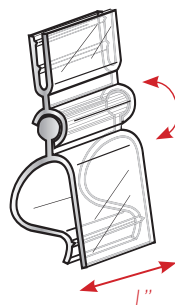
#B3110005 Separate Shelf Clip

1-499	500-999	1000-2499	2500-4999	5000+
\$0.13	\$0.11	\$0.105	\$0.10	\$0.095

Made to fit standard 1/4" molding channels

Swivel Clips

A simple clip that tilts backwards and forwards. Available in translucent or black.



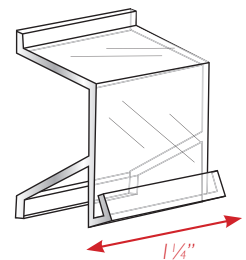
#B3110009 Separate Swivel Clip, Translucent

#B3110008 Separate Swivel Clip, Black

1-499	500-999	1000-2499	2500-4999	5000+
\$0.60	\$0.53	\$0.48	\$0.42	\$0.39

Plastic Molding Clip

Clear molding clips keep signage in track - literally.



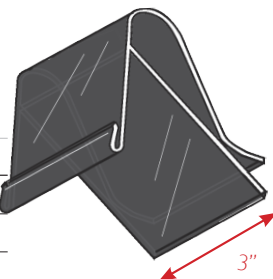
#B3110013 Separate Plastic Molding Clip

1-499	500-999	1000-2499	2500-4999	5000+
\$0.40	\$0.35	\$0.32	\$0.28	\$0.24

Made to fit standard 1/4" molding channels

Black Bucket Clip

Say so long to slipping signage with rugged, snug-fitting Black Bucket Clips!

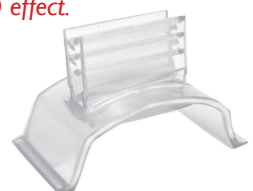


#B3110017 Separate Black Bucket Clip

1-499	500-999	1000-2499	2500-4999	5000+
\$1.50	\$1.20	\$1.00	\$0.90	\$0.80

Outstanding Shelf Clip

Durable, plastic clip offers dramatic 3-D effect. Signage literally jumps off the shelf.



#3110003 Outstanding Shelf Clip

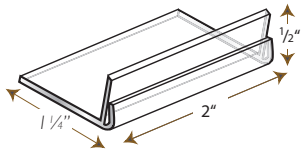
1-499	500-999	1000-2499	2500-4999	5000+
\$0.27	\$0.24	\$0.22	\$0.19	\$0.16

Made to fit standard 1/4" molding channels

Attachments

Easel - 0" High

Place signage upfront in a clear plastic easel for a low profile look.

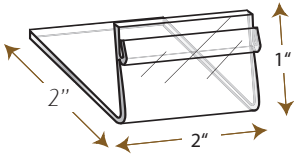


#B3110006 Separate 0" High Easel

1-499	500-999	1000-2499	2500-4999	5000+
\$0.48	\$0.40	\$0.34	\$0.28	\$0.22

Easel - 1" High

Give your signage a lift, a 1" lift to be exact with this clear plastic easel.

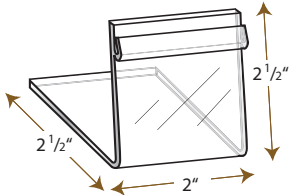


#B3110080 Separate 1" High Easel

1-499	500-999	1000-2499	2500-4999	5000+
\$0.72	\$0.63	\$0.58	\$0.50	\$0.43

Easel - 2" High

Clear plastic 2"-High Easel stand on its own on par with products.

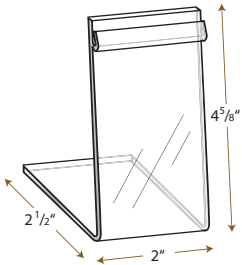


#B3110003 Separate 2" High Easel

1-499	500-999	1000-2499	2500-4999	5000+
\$0.72	\$0.63	\$0.58	\$0.50	\$0.43

Easel - 4" High

Signage will stand out when placed on a 4" easel. Perfect for multi-tiered displays!

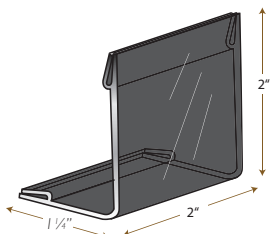


#B3110007 Separate 4" High Easel

1-499	500-999	1000-2499	2500-4999	5000+
\$0.99	\$0.82	\$0.71	\$0.60	\$0.53

Black 2-Way Easel

Twice as nice black easels. Select the height (1 1/8" or 2") for your needs.



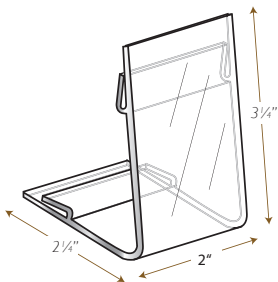
1 1/8" or 2" Heights

#B3110019 Separate Black 2-Way Easel

1-499	500-999	1000-2499	2500-4999	5000+
\$0.68	\$0.57	\$0.52	\$0.47	\$0.40

Clear 2-Way Easel

One clear plastic easel, two choices: 2 5/8" or 3 1/2". Flip to desired angle.



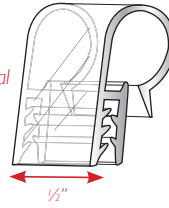
#B3110016 Separate Clear 2-Way Easel

1-499	500-999	1000-2499	2500-4999	5000+
\$0.68	\$0.57	\$0.52	\$0.49	\$0.43

Gripper Clip

Clear, rugged plastic hugs wire rims while the clip teeth firmly hold the signage.

Fits wire up to .375" and holds material up to .080" thick



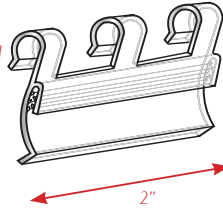
#B3110021 Separate Gripper Clip

1-499	500-999	1000-2499	2500-4999	5000+
\$0.16	\$0.14	\$0.12	\$0.10	\$0.085

Separate Hangers

Clear plastic hangers "hang" over rims, lips and edges while gripping signage.

Fits wire up to .375" and holds material up to .080" thick

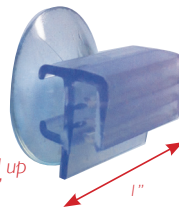


#B3110011 Separate Hangers

1-499	500-999	1000-2499	2500-4999	5000+
\$0.65	\$0.57	\$0.52	\$0.45	\$0.39

Suction Cup Flush Sign Holder

Hang signage from glass or any nonporous surface without leaving a mark.



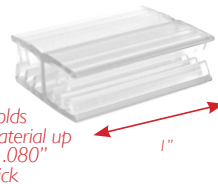
Holds material up to .080" thick

#B3110083 Suction Cup Flush Sign Holder

1-499	500-999	1000-2499	2500-4999	5000+
\$0.55	\$0.48	\$0.44	\$0.39	\$0.33

Super Grip H-Clip

Simply grips the lip or edge of shelving on one side and grasps signage on the other.



Holds material up to .080" thick

#3110005 Super Grip H-Clip. 1" w

1-499	500-999	1000-2499	2500-4999	5000+
\$0.27	\$0.24	\$0.22	\$0.19	\$0.17

Harp Clips

Petite metal sign holders lend an elegant touch to display cases. These stylish space savers make positioning product signage effortless.



#B3120030 Black Harp Clip - 1 1/2"

1-99	100-249	250-499	500-999	1000+
\$2.15	\$1.89	\$1.72	\$1.49	\$1.29

Weighted Base Teardrop Sign Holder

Sleek, shiny, black, weighted sign holder is best suited to display cases.



#3430026 Weighted Base Teardrop Sign Holder - 1" h

1-99	100-249	250-499	500-999	1000+
\$5.40	\$4.75	\$4.32	\$3.78	\$3.24

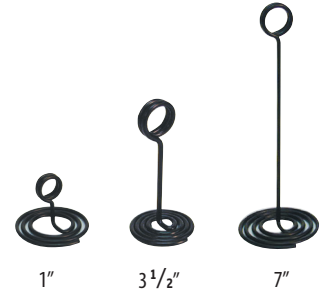
Attachments

Black Swirl Sign Holders

Quantity:	1-99	100-499	500-999	1000-2499	2500+
#B3120009 1" high	\$2.92	\$2.34	\$2.04	\$1.78	\$1.69
#B3120011 3 1/2" high	\$3.09	\$2.47	\$2.16	\$1.90	\$1.79
#B3120015 7" high	\$4.28	\$3.42	\$2.99	\$2.56	\$2.49

Black Swirl Sign Holders

Black wire coiled into a stylish swirl steadies and showcases signage. Available in assorted sizes.



Chrome Solid Base Card Holders

Quantity:	1-99	100-249	250-499	500-999	1000+
#B3120023 2" high	\$1.39	\$1.22	\$1.11	\$0.98	\$0.85
#B3120024 4" high	\$3.36	\$2.65	\$2.52	\$2.39	\$2.17
#B3120025 6" high	\$3.58	\$2.82	\$2.69	\$2.53	\$2.30
#B3120026 8" high	\$3.95	\$3.48	\$3.16	\$2.77	\$2.45
#B3120027 10" high	\$4.00	\$3.15	\$3.00	\$2.84	\$2.59

Chrome Card Holders

Sturdy and stylish, your signage shine in lightweight chrome holders in various size.



#B3120052 Galvanized Sign Holder - 6". Bags of 25

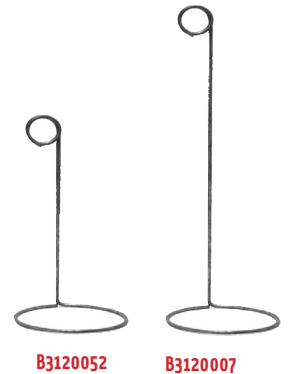
1-4	5-9	10-19	20-39	40+
\$54.50	\$47.96	\$43.60	\$38.15	\$32.75

#B3120007 Galvanized Sign Holder - 10". Bags of 25

1-4	5-9	10-19	20-39	40+
\$78.50	\$69.00	\$62.80	\$54.95	\$47.10

Galvanized Sign Holder

Excellent for signage exposed to moisture like produce misters, coolers, plant/floral. These 6" or 10" holders retain their strength and simple good looks.



B3120052

B3120007

Hot Case Sign Holders

We have a variety of signage designed for use with hot food cases. These signage range from aluminum sign holders and attachments to heat resistant tags and inserts.

#B3110104 Heat Resistant Separate Plastic Pan Clip

1-499	500-999	1000-2499	2500-4999	5000+
\$2.60	\$2.29	\$2.08	\$1.82	\$1.56

Heat Resistant Separate Plastic Pan Clip

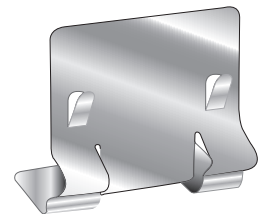
Made from durable FDA and NSF approved material. Heat resistant up to 480°F. Dishwasher safe. Concealed rugged teeth ensure a tight grip so signage stays put.

Holds signs at 3 different viewing angles.



#B3120003 Pan Clip, Stainless Steel

1-499	500-999	1000-2499	2500-4999	5000+
\$1.15	\$1.02	\$0.92	\$0.81	\$0.69



#B3110105 Heat Resistant Separate Stainless Steel 0" Easel

1-499	500-999	1000-2499	2500-4999	5000+
\$2.35	\$2.05	\$1.88	\$1.65	\$1.40

Heat Resistant Separate Stainless Steel 0" Easel

Position heat resistant signage securely in sturdy 0" easels for a clean seamless look that never goes out of style.



Pair With A Heat Resistant Tag

Print your list, logo and price on a Heat Resistant Tag using the BlackFlex ribbon, then pair with our Heat Resistant Separate Plastic Pan Clip or Stainless Steel 0" Easel, above for a classic, clean look that complements all décor styles.

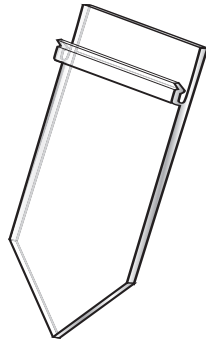
#B3290013 White Heat Resistant Tag - Quantity 100. 2 1/8" h x 3 3/8" w

1-24	25-49	50-99	100-249	250+
\$86.00	\$75.00	\$69.00	\$60.00	\$52.00

Heat Resistant Tag

BlackFlex ribbon (#B3350023).

Attachments and Runners

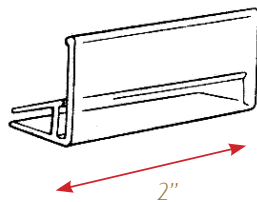


Plastic Spear

Clear and concise signage holder. Sturdy Plastic Spears get to the point.

#B3110002 Separate Plastic Spear

1-499	500-999	1000-2499	2500-4999	5000+
\$1.25	\$1.10	\$1.00	\$0.88	\$0.75



Glass Shelf Attachment

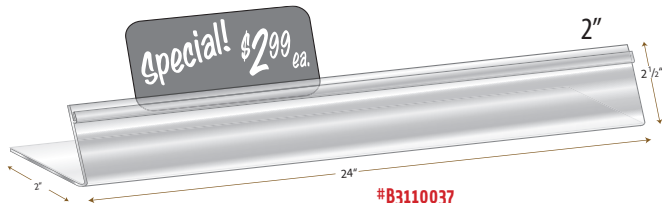
Clear plastic attachment keeps signage straight and flush with the shelf.

#B3110015 Separate Glass Shelf Attachment

1-499	500-999	1000-2499	2500-4999	5000+
\$1.00	\$0.88	\$0.80	\$0.70	\$0.60



#B3110036



#B3110037

Runners - 24" Length

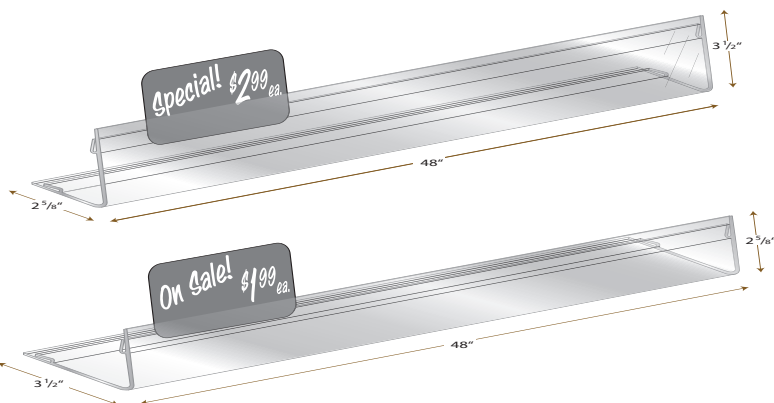
These runners offer movable signage making them perfect for impromptu sales.

#B3110036 Deli Runner with 0" h and 2" Base. 24" w

1-99	100-249	250-499	500-999	1000+
\$4.10	\$3.60	\$3.25	\$2.85	\$2.45

#B3110037 Deli Runner with 2" h and 2" Base. 24" w

1-99	100-249	250-499	500-999	1000+
\$5.50	\$4.84	\$4.40	\$3.85	\$3.50



2-Way Runners - 48" Length

Practically two for the price of one. Choose 2 5/8" height or flip for 3 1/2" height. Great options.

#B3110020 2-Way Runner with either 2 5/8" or 3 1/2" Base. 48" w

1-99	100-249	250-499	500-999	1000+
\$9.95	\$8.75	\$7.96	\$7.46	\$6.96

Adapta-Strip™ Attachments



Adapta-Strip™ Removable Attachment System

Tag holders fitted with an Adapta-Strip™ offer an array of display options with the addition of Adapta-specific accessories. Simply slide your choice of Adapta-Uni-Joint Clip™, Adapta-Mounting Clip™, Adapta-Basket Clip™, Adapta-Pick™, Adapta-Tilting Step Displays™, Adapta Tilting Jumbo Spring Clip™, Adapta-Tilting Magnetic Base Sign Holder™, Adapta-Sign Holder for Euro Table™, or Adapta-Sloping Refrigerated Case Sign Holder™ into position and place the stationary signage where needed. It's that easy and convenient.

#3110132 Black Adapta-Uni-Joint Clip™ - No Extender

1-499	500-999	1000-2499	2500-4999	5000+
\$2.85	\$2.51	\$2.34	\$2.16	\$1.99

Black Adapta-Uni-Joint Clip™

Add flexibility to your signage with our pivoting Adapta-Uni-Joint Clip™.



#3110128 Black Adapta-Uni-Joint Clip™ with 2" Extender

1-499	500-999	1000-2499	2500-4999	5000+
\$3.25	\$2.86	\$2.66	\$2.47	\$2.37

Black Adapta-Uni-Joint Clip™ with 2" Extender

Obstructed view? Add height and movement with our Black Adapta-Uni-Joint Clip™ with 2" Extender.



#3110072 Clear Adapta-Uni-Joint Clip™ - No Extender

1-499	500-999	1000-2499	2500-4999	5000+
\$2.85	\$2.51	\$2.34	\$2.16	\$1.99

Clear Adapta-Uni-Joint Clip™

Offering the same flexible pivot as our Black Adapta-Uni-Joint Clip™, but in clear.



#3110044 Clear Adapta-Uni-Joint Clip™ with 2" Extender

1-499	500-999	1000-2499	2500-4999	5000+
\$3.25	\$2.86	\$2.66	\$2.47	\$2.27

Clear Adapta-Uni-Joint Clip™ with 2" Extender

It's clear. Your signage will reach new heights with our Clear Adapta-Uni-Joint Clip™ with 2" Extender.

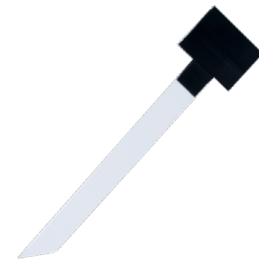


#3110134 Clear Adapta-Pick™, 8" h

1-499	500-999	1000-2499	2500-4999	5000+
\$1.75	\$1.54	\$1.40	\$1.22	\$1.05

Clear Adapta-Pick™ - 8" H

Stake your claim to increased sales with these 8" Clear Adapta-Pick™ attachments.



#3110071 Clear Adapta-Basket Clip™

1-499	500-999	1000-2499	2500-4999	5000+
\$1.05	\$0.92	\$0.84	\$0.73	\$0.63

Clear Adapta-Basket Clip™

Hanging on your every word. These clear Adapta-Basket Clip™ are placed on the edge of a product basket or bin.



#3110006 Clear Adapta Mounting Clip, 3" w

1-499	500-999	1000-2499	2500-4999	5000+
\$0.85	\$0.75	\$0.68	\$0.60	\$0.51

Clear Adapta-Mounting Clip™ - 3" W

The clean, easy way to secure track in its place. Slide the 3"-clip into the Adapta-Strip™, position in shelf molding or channel.



Adapta Sign Holders



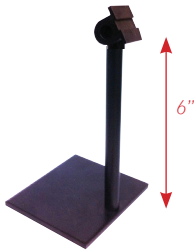
Adapta Sign Holder Slides into Built-in Adapt-Strip™

Tag Holder with Built-in Adapter, Topper Slot and PLU Window.
2 1/8" H x 3 3/8" W

The durable, classic black plastic includes a built-in adapter that is suited to the Adapta line of attachments that can take your signage to new heights via clips, and more. Plus the PLU window offers retailers access to pertinent information without disrupting the display.

#B3430055 Tag Holder with Built-in Adapter, Topper Slot and PLU Window - Pack of 25. 2 1/8" h x 3 3/8" w

1-24	25-49	50-99	100-249	250+
\$33.75	\$29.75	\$27.00	\$23.75	\$20.00

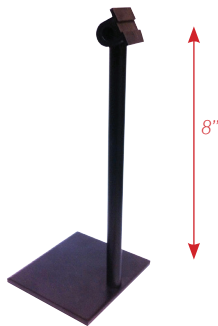


Adapta-Tilting Step Display Stand™ - 6"H

Nestle among product or produce for low-profile signage, this 6" tilting display stand keeps pricing close to products and tilts to just the right angle.

#B3420064 Adapta-Tilting Step Display Stand™. 6"h

1-49	50-99	100-499	500-999	1000+
\$29.00	\$26.50	\$24.05	\$22.60	\$20.30

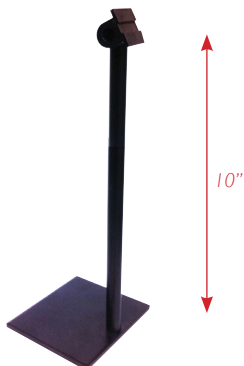


Adapta-Tilting Step Display Stand™ - 8"H

Sturdy black aluminum 8" swivel sign holder works in all departments. For use in flat or stair step displays. Swivels for an easy, adjustable tilt.

#B3420050 Adapta-Tilting Step Display Stand™. 8"h

1-49	50-99	100-499	500-999	1000+
\$29.50	\$26.95	\$24.50	\$22.95	\$20.65



Adapta-Tilting Step Display Stand™ - 10"H

This rugged 10" tilting display stand adds versatility to your product presentations. It's both space-saving and a standout.

#B3420065 Adapta-Tilting Step Display Stand™. 10"h

1-49	50-99	100-499	500-999	1000+
\$30.00	\$27.54	\$24.90	\$23.40	\$21.00

Adapta Sign Holders

#B3110103 Adapta-Tilting Jumbo Spring Clip™				
1-99	100-499	500-999	1000-2499	2500+
\$9.95	\$8.95	\$8.20	\$7.25	\$6.15

Adapta-Tilting Jumbo Spring Clip™

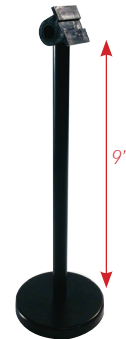
Versatility personified. This hardy clip latches on to practically any edge while its swivel adapter allows for easy signage adjustment.



#B3420053 Adapta-Tilting Magnetic Base Sign Holder™. 9" h				
1-49	50-99	100-499	500-999	1000+
\$32.50	\$29.50	\$26.75	\$25.05	\$22.65

Adapta-Tilting Magnetic Base Sign Holder™ - 9" H

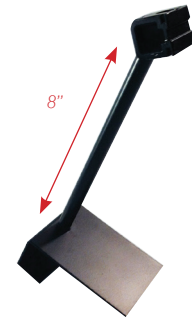
Black aluminum sign holder with strong magnetic base provides an easy-change function, while the swivel adapter makes angle adjustments a breeze. Great for floral departments.



#B3420051 Adapta-Sign Holder for Euro Table Stand™. 8" h				
1-49	50-99	100-499	500-999	1000+
\$24.50	\$22.50	\$20.35	\$18.95	\$16.95

Adapta-Sign Holder for Euro Table™ - 8" H

Place signage securely at an angle with these black aluminum, no-swivel stands. The base slides into place and stays there. Measures approximately 8" in height.



#B3420052 Adapta-Sloping Refrigerated Case Sign Holder™. 8" h				
1-49	50-99	100-499	500-999	1000+
\$27.95	\$25.75	\$23.25	\$21.75	\$19.50

Adapta-Sloping Refrigerated Case Sign Holder™ - 8" H

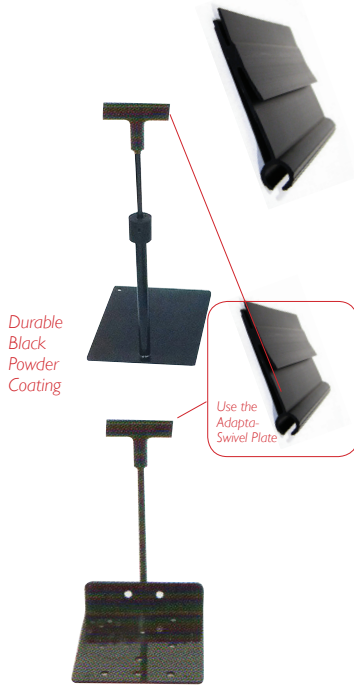
This no-swivel black aluminum holder anchors signage in refrigerated cases. Its sleek appearance keeps signage and cases neat, clean and organized.



Adapta-Swivel Attachments

Adapta-Swivel Plate™ Attachment

Allow your tags and tag holder with Adapta-Strip™ more movement with the addition of the Adapta-Swivel Plate™. Once attached to the Adapta-Strip™ on the tag holder, the Adapta-Swivel Plate™ can accommodate a Metal Adapta Swivel Shovel Base Stand (standard and telescopic), Adapta Swivel Shelf Clip, Adapta Swivel Basket Clip, or Adapta Swivel Easel. These attachments offer flexibility in positioning and visibility. A perfect accompaniment to tag holders, choose one or all for more versatility in departmental signage and displays.



Adapta-Swivel Plate™

#3110056 Adapta-Swivel Plate™. 3" w					
1-499	500-999	1000-2499	2500-4999	5000+	
\$0.85	\$0.75	\$0.68	\$0.60	\$0.51	

Metal Adapta-Swivel Shovel Base Stand™ - Telescopic

Twist, turn and telescope, that's what this black aluminum sign holder does effortlessly. Use in a flat case or anywhere signage is needed. For use with Adapta-Swivel Plate and Adapta-Strip™.

#B3420054 Metal Adapta-Swivel Shovel Base Stand™ - Telescopic					
1-49	50-99	100-499	500-999	1000+	
\$27.25	\$23.95	\$21.80	\$19.00	\$16.35	

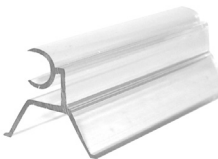
Metal Adapta-Swivel Shovel Base Stand™

The rugged, wide base stand tucks discreetly under displays or products creating movable, sturdy signage anywhere you place it. For use with Adapta-Swivel Plate.

Metal Adapta-Swivel Shovel Base Stand™						
	1-49	50-99	100-499	500-999	1000+	
#3420060 with 6" Stem	\$11.95	\$10.50	9.55	\$8.40	\$7.25	
#3420062 with 8" Stem	\$13.50	\$11.90	\$10.80	\$9.45	\$8.25	
#3420061 with 12" Stem	\$14.95	\$13.15	\$11.95	\$10.50	\$8.95	

Clear Adapta-Swivel Shelf Clip™

Inconspicuous, the signage blends seamlessly into the track but lends a 3-D appearance highlighting the item name and price.



#3110023 Clear Adapta-Swivel Shelf Clip™					
1-499	500-999	1000-2499	2500-4999	5000+	
\$1.95	\$1.72	\$1.56	\$1.37	\$1.17	

Clear Adapta-Swivel Plastic Basket Clip™ - 3"W

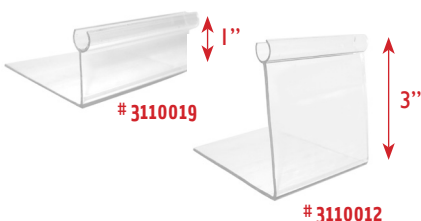
A good-looking clip with an equally good grip! Effortlessly secures signage to a 1/2"-thick (or less) basket edge.



#3110016 Clear Adapta-Swivel Plastic Basket Clip™. 3" w					
1-499	500-999	1000-2499	2500-4999	5000+	
\$0.75	\$0.66	\$0.62	\$0.57	\$0.52	

Clear Adapta-Swivel Easel™ - 1"H or 3"H

Elevate signage 1" or 3" (each sold separately) for better visibility or vantage point with a tilt. Use as a stand-alone sign or surround with product.



#3110019 Clear Adapta-Swivel Easel™. 1" h					
1-499	500-999	1000-2499	2500-4999	5000+	
\$2.25	\$1.98	\$1.80	\$1.58	\$1.35	
#3110012 Clear Adapta-Swivel Easel™. 3" h					
1-499	500-999	1000-2499	2500-4999	5000+	
\$2.95	\$2.59	\$2.36	\$2.07	\$1.77	

Contact Information

Toll Free: 888-332-5262
International: +973-537-0090
Fax: 973-537-0906 or Toll Free at 1-888-476-2797
Ask to speak to our Customer Service Department,
or you may speak directly with your sales representative.
(M-F 8:30am -7:00pm EST)

Ordering Procedures

Ordering from Blanc Display Group is simple. If you have never ordered from us before, there are a few options. We gladly accept Visa, MasterCard, American Express and Discover Card. There is a minimum order charge of \$25 for all orders under \$100 (not including tax and shipping/handling).

Cash on Delivery (COD)

If you need product ASAP and are not on terms with us, we can send your order COD. On the day it ships, or shortly thereafter, someone will contact you from customer service with the total amount including any and all shipping and handling charges. Have that amount ready in a check and give it to the UPS driver when it arrives (additional charges apply).

Prepay

Another option is to prepay the total amount due. Your sales representative will contact you with the total amount including shipping and handling after your order is processed. Send the payment to us and once we receive it, your order is on its way.

Open an Account

If you would like to be considered for billing terms, request a credit application from our Customer Service Department at 1-888-332-5262 or customerservice@blancind.com. Complete it, then email or fax it back to us. Once it is processed, our Accounts Receivable Department will contact you in regard to the terms.

Lead Time and Delivery

Standard orders for stock merchandise are processed and shipped in approx. 3-5 days. Orders for custom items may take up to 6-8 weeks.

Disclaimer

At Blanc Display Group, we are committed to delivering the highest quality products at the most reasonable prices. As such, we are continually working to improve our processes as well as the final product. Therefore, we reserve the right to change pricing on or discontinue an item without notice where conditions or availability warrant.

Payment

Our payment terms are Net 10 days from the date of the invoice, unless otherwise noted. If you are not on payment terms with us, your options are outlined in the "Open an Account" section.

Shipping & Handling

Most orders are shipped via UPS Ground unless otherwise requested. Next Day Air, Second Day Air, 3-Day Select, and Saturday Delivery are available upon request, though additional charges apply. Other carriers (FedEx, USPS), Freight carriers (Old Dominion) or local couriers are also available upon request.

Brokers/Distributors, inquire about direct shipments to your customers.

International Shipments

Contact our Customer Service Department about international shipments. In most cases, any and all shipping and handling charges are prepaid and added to your order. If you would like, we can bill the charges directly to you if you provide us with a valid UPS or FedEx account number.

Return Policy

Returns are subject to authorization from our Customer Service Department. A 20% restocking fee will apply. There are NO RETURNS on custom items.

Lost or Damaged Shipments

If you receive your order damaged, please do not open or unpack it. Instead, immediately notify the delivery driver as well as our Customer Service Department. We will work with you and the carrier to resolve the issue quickly. The same applies if your order was lost in transit. You may contact us at any time for tracking information.

Online Ordering

For your convenience, Blanc Display Group offers online ordering. Peruse our catalog at www.blancind.com/products. Simply make your item selection(s), quantity, shipping option and your payment method. It's that easy. For questions regarding merchandise, your order or for rush orders please contact our Customer Service Department at 1-888-332-5262 or customerservice@blancind.com. A representative will gladly assist you.

Create Price Tags in Seconds! New all-in-one printers.



Access



Flex



Duplex

DO-IT-YOURSELF (DIY) PRICE TAGS GO PRO WITH EDIKIO THERMAL TRANSFER PRINTERS

- PERFECT FOR:
- CUSTOM MERCHANDISE
 - DESSERT DISPLAYS
 - PROMOTIONAL SALES
 - NUTRITION LABELING
 - ALLERGEN NOTIFICATION
 - STAFF TRAINING
 - INVENTORY CONTROL
 - PRODUCT INFORMATION, AND MORE.

Take creative control of your messaging with these easy-to-use, all-inclusive thermal printing systems and accessories. The possibilities are endless!



Blanc

displaygroup

88 King Street • Dover, NJ 07801
1-888-332-5262
www.blancind.com

